



# barb clips

Ideal for horizontal support on refrigeration installations.



Channel



Rod



Surface

## KEY FEATURES

- Fast fixing directly into a 10mm hole without the need for screws or plugs
- Unique lockable ratchet design
- Fits metric and imperial pipe


### SPECIFICATIONS

Materials of construction	Nylon
Max. temp	70°C
Max. rec. distance per clip	1.2m

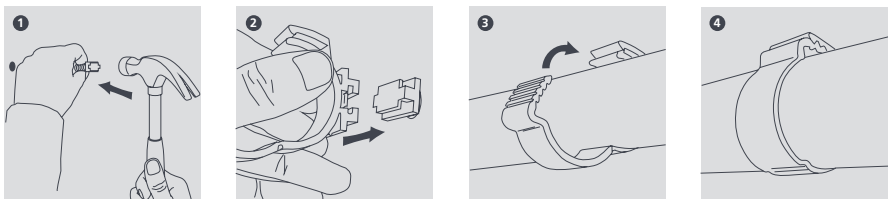
### SIZING OPTIONS

Size	Part No.	Pack Qty
22mm (7/8")	B7006	10
28mm (1 1/8")	B7008	10
32mm (1 1/4")	B7009	10
35mm (1 3/8")	B7010	10
2 pipe (1/2" - 7/8" to 5/8" - 1 1/8")	B7300	5

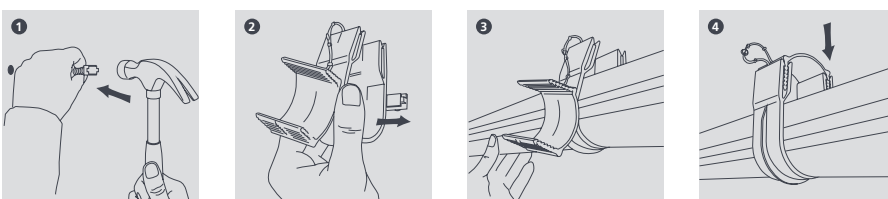
Approximate pipe sizes (allowing for 13mm insulation)

 For further details please refer to our website [aspenpumps.com/xtra](http://aspenpumps.com/xtra)

### BARB CLIP 1 PIPE INSTALL



### BARB CLIP 2 PIPE INSTALL



Information correct at time of going to press.